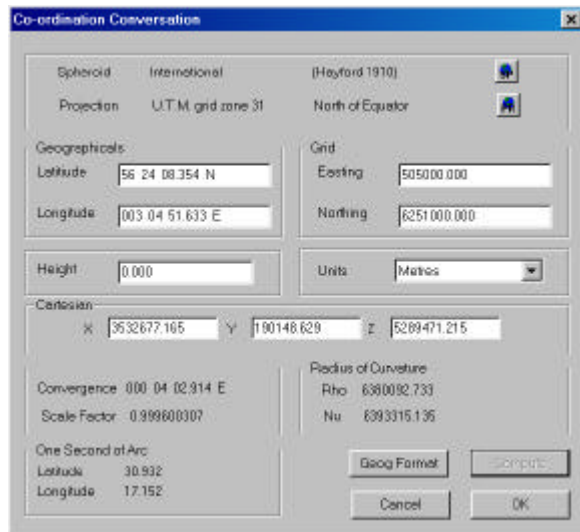


Geodetic



The software can be used to perform the following computations

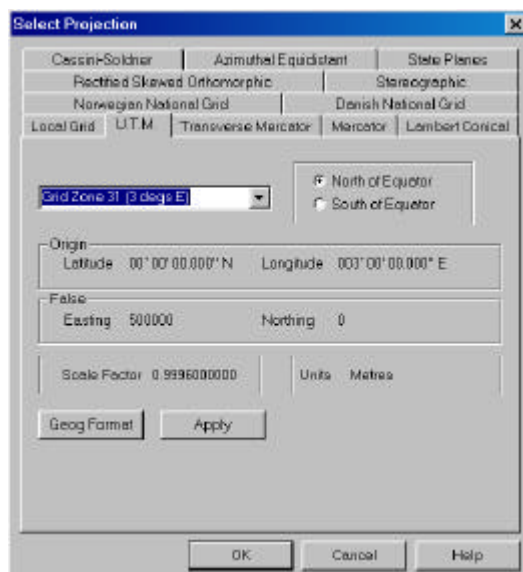
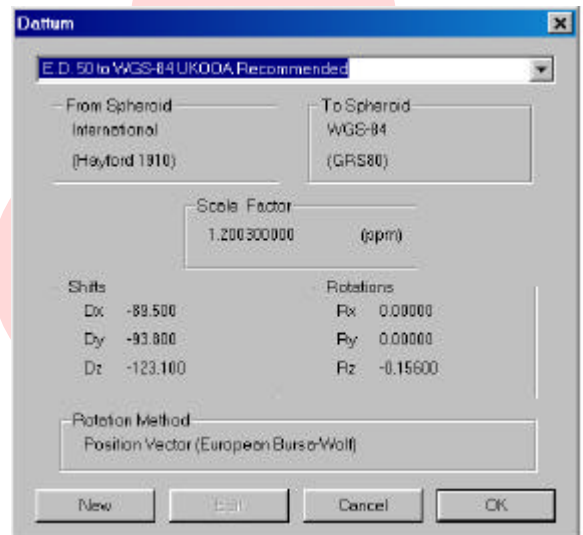
- Grid to geographicals
- Datum shifts
- Range and bearing between two points.
- Rhumb and Great Circle Ranges.

User input of all parameters for from pre-defined data.

Over 20 pre-defined spheroids,

Over 150 pre-defined projection parameters.

Predefined datum shift parameters including WGS84 to OSGB36 and Norwegian Datum.



Projections include

- Transverse Mercator,
- Mercator,
- Lambert Conical
- Cassini-Soldner
- Azimuthal Equidistant
- State Plane (USA),
- Rectified Skew Orthomorphic (Borneo and Malaysia)
- Norwegian National Grid (NGO)
- Stereographic
- Danish National Grid

