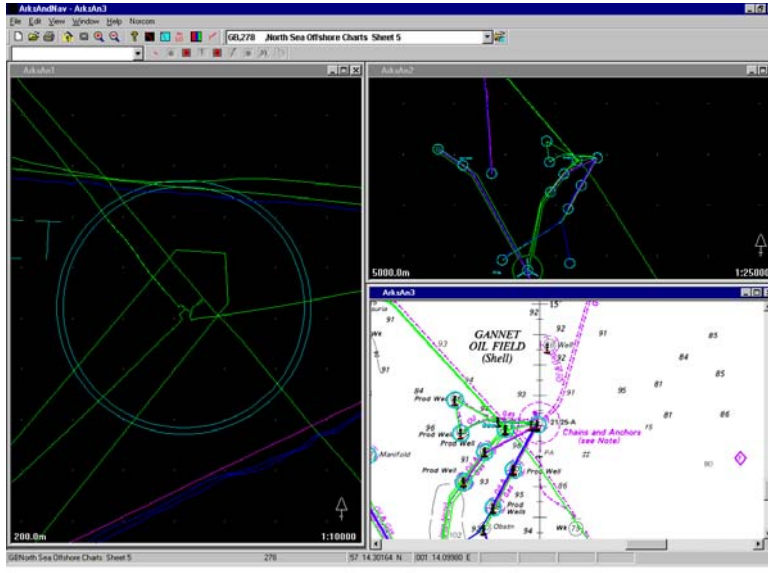


Ptolemy

Online Navigation Software



PC based online navigation and positioning software for Hydrographic survey work.

Propriety techniques are used to acquire, compute, display and log data from multiple survey

- Multiple display windows either vector or raster data.
- Vector data compiled from DXF files, UKOOA pipeline data and Kingfisher KIS files.
- UK Hydrographic ARCS raster data displayed with optional vector overlays.
- All data clearly identified with own colour, all colours can be user defined.
- Each window can be individually scaled. Vector displayed can be displayed at any rotation.
- Ability to overlay real time information including multiple vessel positions acquired via GPS unit, over telemetry or from vessel's radar.
- Each vessel clearly identified by name and or colour.
- Supports multiple monitors using a dual or quad graphics card. All monitors individually controlled.

Norcom Technology

50 Unthank Rd, NORWICH, Norfolk, NR2 2RF, UK



+44 (0) 1603 765 252

+44 (0) 1603 765 253

enquiries@norcom.demon.co.uk

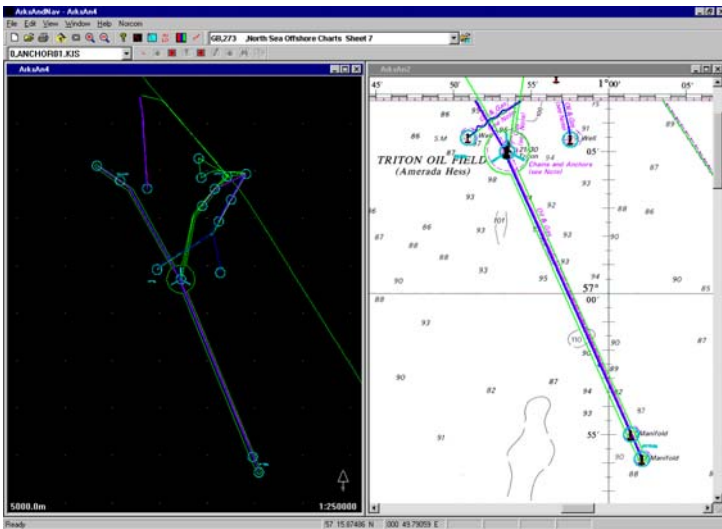
Ptolemy

Online Navigation Software

The programmable Communication Controller (PCC) is an intelligent multichannel serial communication I/O card which allows 4, 8 or 16 serial devices to be interfaced to a single PC compatible computer.

Application control software is downloaded to the interface card at system power up. The software allows data to be buffered and accurately time tagged to 0.01 of a second. Drivers have been written for a wide range of devices, which will buffer, time tag, validate, decode and if necessary, reformat into a set of standard strings.

Split Screen Display

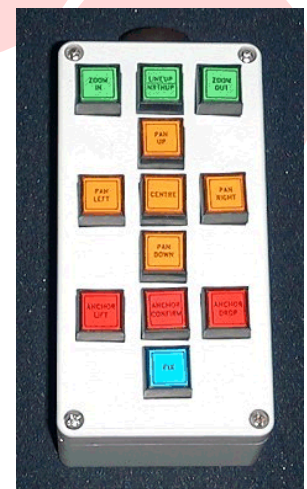


Split Screen Display with vector and raster displays

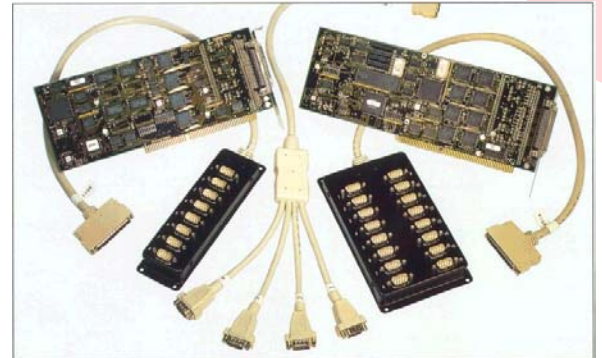
Video Control Box

The Video Control Box (VCB) provides the ability to control supplementary screens without affecting the main display using a series of buttons. The VCB is interfaced to the PC using either a games or parallel port. The buttons are illuminated to assist when operating the unit in the dark. The VCB is supplied with a 5-metre cable although arrangements can be made to use the VCB over longer distances.

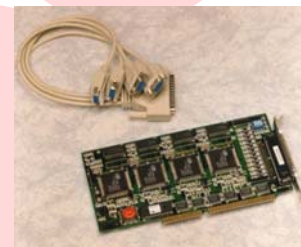
Functions of the buttons can include:- Scale up or down, Re-centre display, Pan display, Drop or recover anchor and Manual Fix



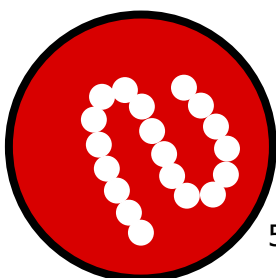
Programmable Communication Controller



Multiple Screen Displays



The Norcom Graphics Adapter (NGA) is a multi-channel super VGA card for the PC. The card is designed to enable a number of colour monitors to be driven with different and independent displays from a single computer.



Norcom Technology

50 Unthank Rd, NORWICH, Norfolk, NR2 2RF, UK



+44 (0) 1603 765 252

+44 (0) 1603 765 253

enquiries@norcom.demon.co.uk