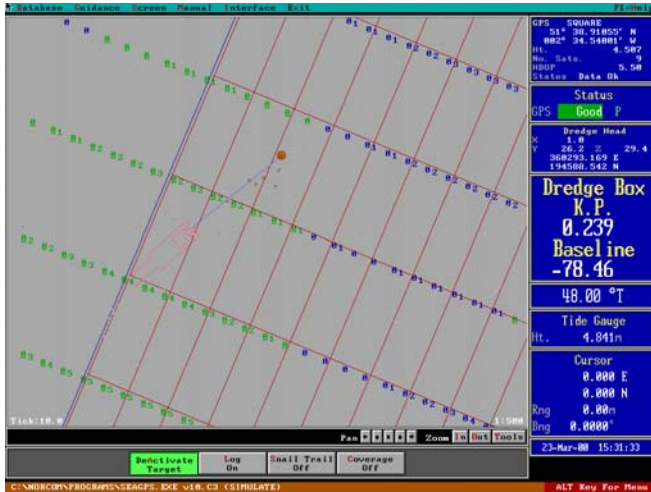


# SeaGPS

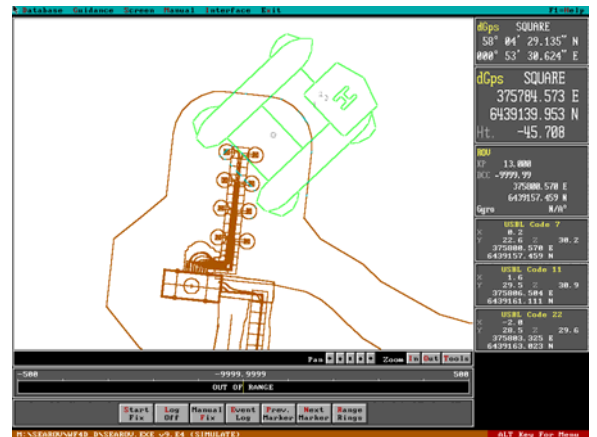
Online Navigation Software



PC based online navigation and positioning software for hydrographic survey work. Proprietary techniques are used to acquire, compute, display and log data from multiple survey sensors.

Navigation data displayed and compared from two differential GPS systems. Up to 16 USBL beacons can be monitored simultaneously. Heading from the USBL system, Gyro or manually entered.

- Ability to graphically display vessel outline, survey lines, marker positions, pipelines, digitized coastline etc.
- The operator can configure the alpha boxes.
- Data can be output to a variety of devices in user-defined format.
- Additional displays can be configured using a dual or quad graphics card. Their own button boxes can control the additional displays.
- All database and logged data is stored in ASCII format.



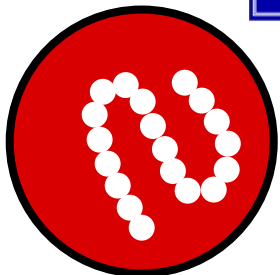
- All database parameters automatically logged to disk for fast restart option.
- All survey sensor data can be logged continuously or at a user-defined interval.
- Optional Left / Right indicator can be displayed.
- Real time swath bathymetry coverage.
- Real time event log

Device Name	Baud Rate	Parity	Data Bits	Stop Bits	Input Buffer	Output Buffer	Term Char	Error Status
01 VERTIPUS	9600	NONE	8	1	1024	16	LF	
02 SPMVXG	9600	NONE	8	1	1024	16	LF	
03 DESO	9600	NONE	8	1	8192	256	LF	
04 SKR80	9600	ODD	8	2	16	16	00h	
05 NULL	9600	NONE	8	1	256	256	LF	
06 NULL	9600	NONE	8	1	256	256	LF	
07 NULL	9600	NONE	8	1	256	256	LF	
08 TELEMETRY	9600	NONE	8	1	256	256	c0h	

Veripos using A1,A2,A3 DGPS and CMEAS

Enter = CR/LF

F1 = HELP



**Norcom Technology**

50 Unthank Rd, NORWICH, Norfolk, NR2 2RF, UK



+ 44 (0) 1603 765252

+ 44 (0) 1603 765253

enquiries@norcom.demon.co.uk