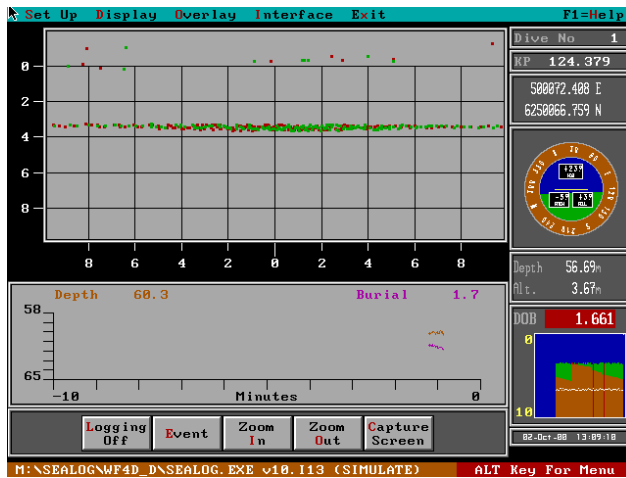


SeaLOG

ROV Data Acquisition Software



SeaLOG is a data logging and display system which gathers from a series of ROV sensors.

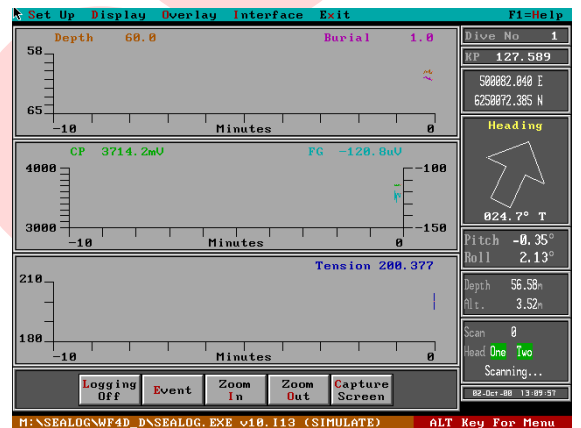
The software uses the Norcom's 8 port intelligent RS232 card to ensure no data is lost.

SeaLOG software works in conjunction with Norcom's SeaROV software to correlate position with sensor data.

Data logged includes:-

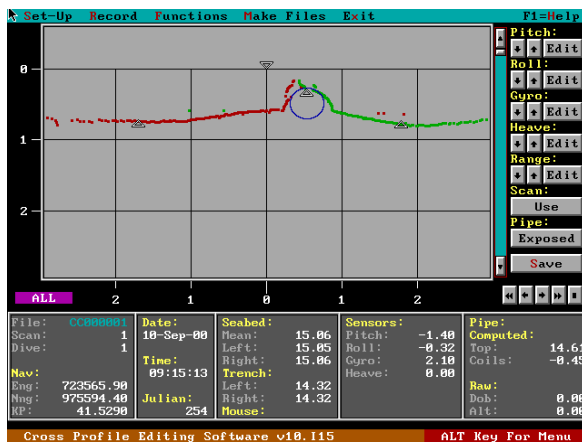
- Scanning Sonar
- Depth and Altitude
- Depth of Burial
- ROV Heading
- ROV Pitch and Roll
- ROV Position
- Raw CP Reading

The software outputs time and position to a video overlay unit.



Scan data collected by the SeaLOG program can be post processed through the Scan Edit program. From this data it is possible to compute the top of pipe coordinates, mean seabed depth left and right of the pipeline and the trench depth.

All this data can be plotted as a three-box chart; pipe position, longitudinal profile and a series of cross profiles using the SeaCHART software



Norcom Technology

50 Unthank Rd, NORWICH, Norfolk, NR2 2RF, UK



+ 44 (0) 1603 756252

+ 44 (0) 1603 756253

enquiries@norcom.demon.co.uk

